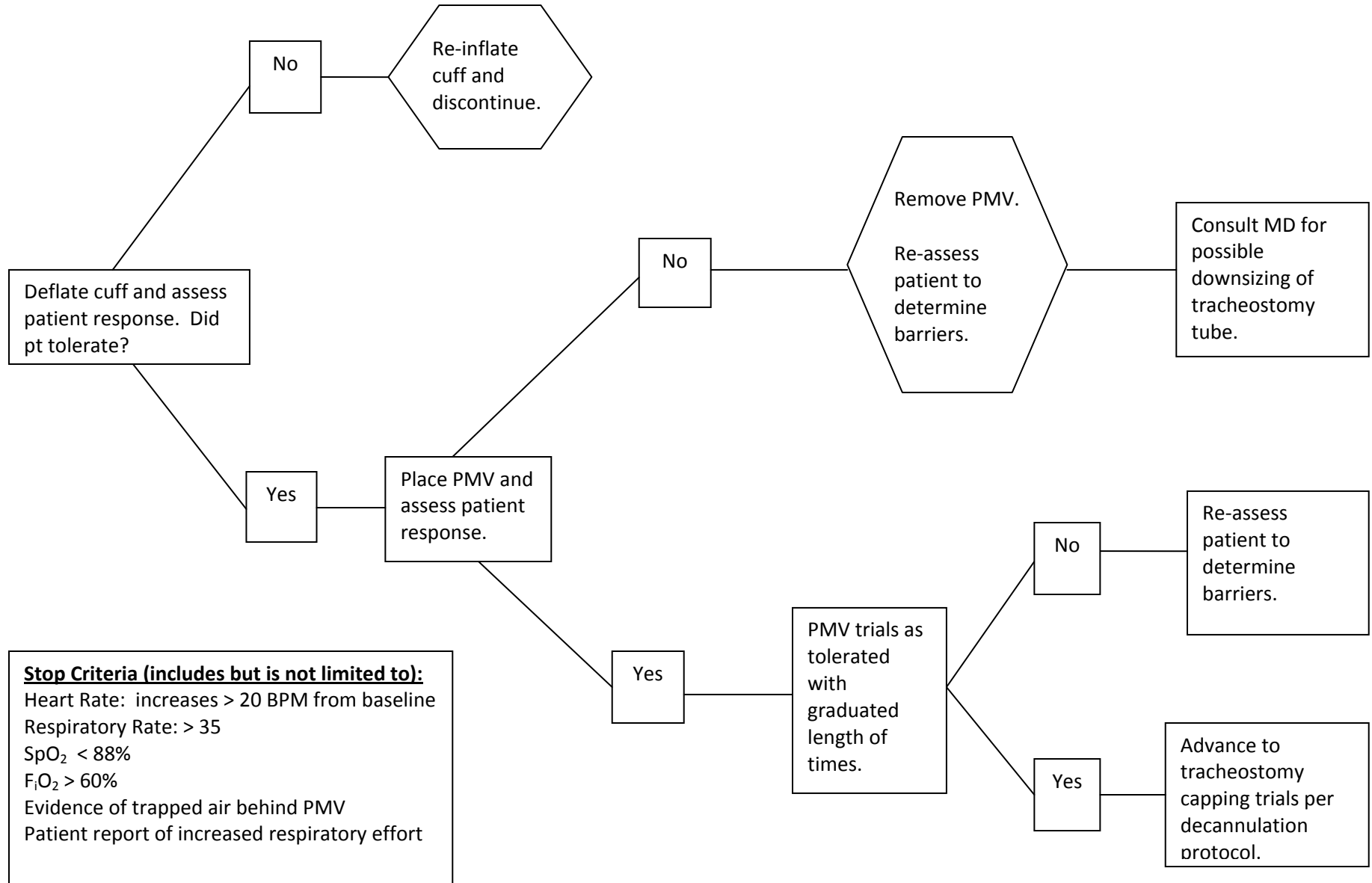
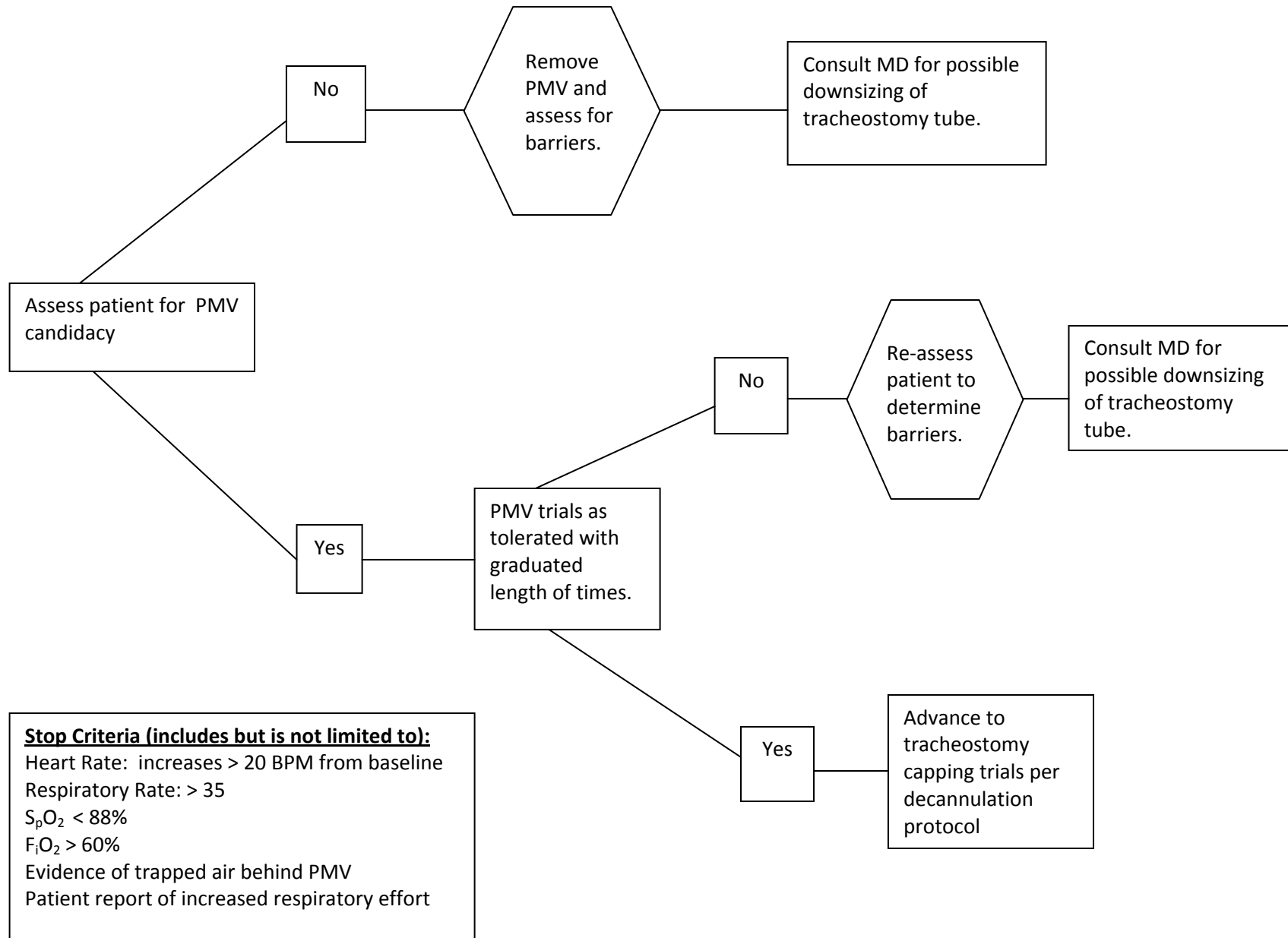


PMV Protocol for Cuffed Tracheostomy Tubes



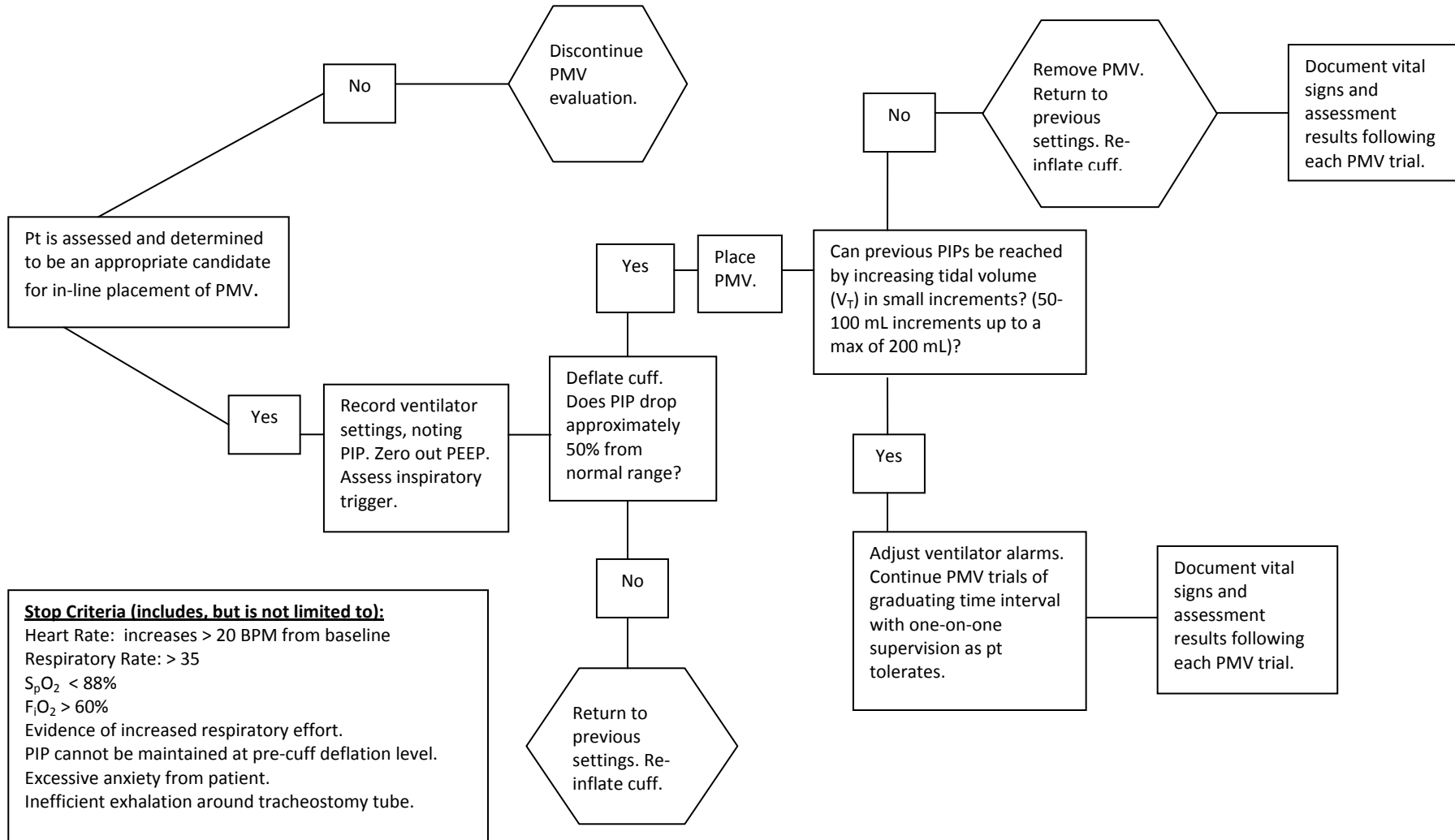
PMV Protocol for Cuffless Tracheostomy Tubes



PMV Protocol for Cuffed Tracheostomy Tubes for Patients on Ventilators

Candidates for In-Line Placement (includes but is not limited to):

Awake and responsive.
 Stable medical condition.
 Does not have a foam cuff tracheostomy tube.
 PEEP < 10



Stop Criteria (includes, but is not limited to):

Heart Rate: increases > 20 BPM from baseline
 Respiratory Rate: > 35
 $S_pO_2 < 88\%$
 $F_iO_2 > 60\%$
 Evidence of increased respiratory effort.
 PIP cannot be maintained at pre-cuff deflation level.
 Excessive anxiety from patient.
 Inefficient exhalation around tracheostomy tube.